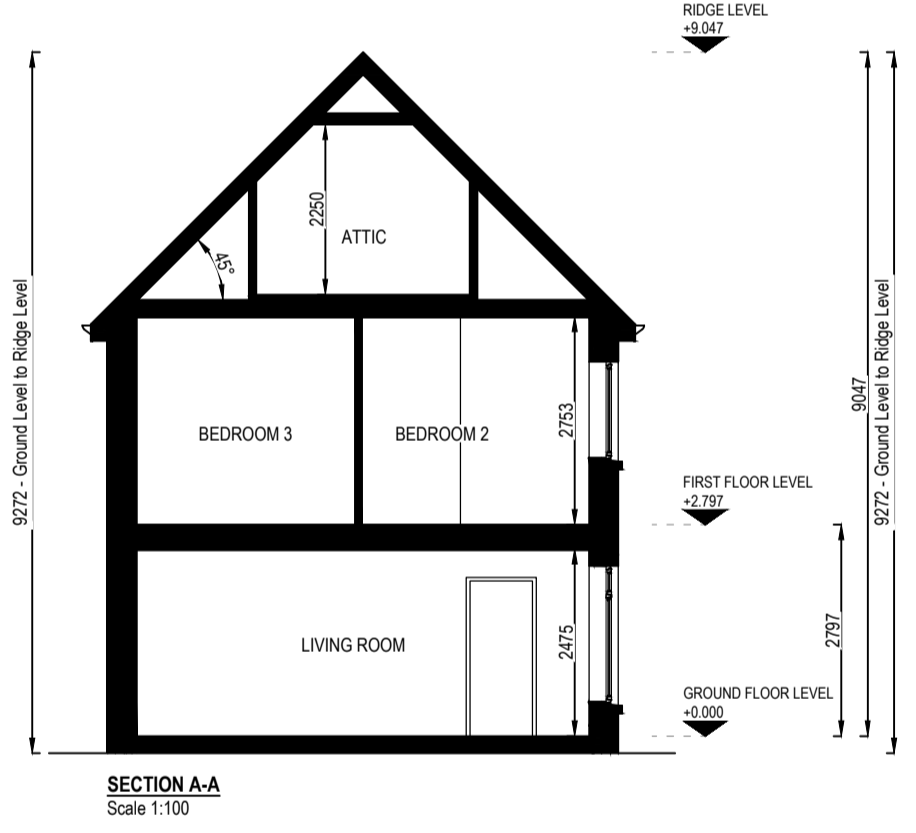


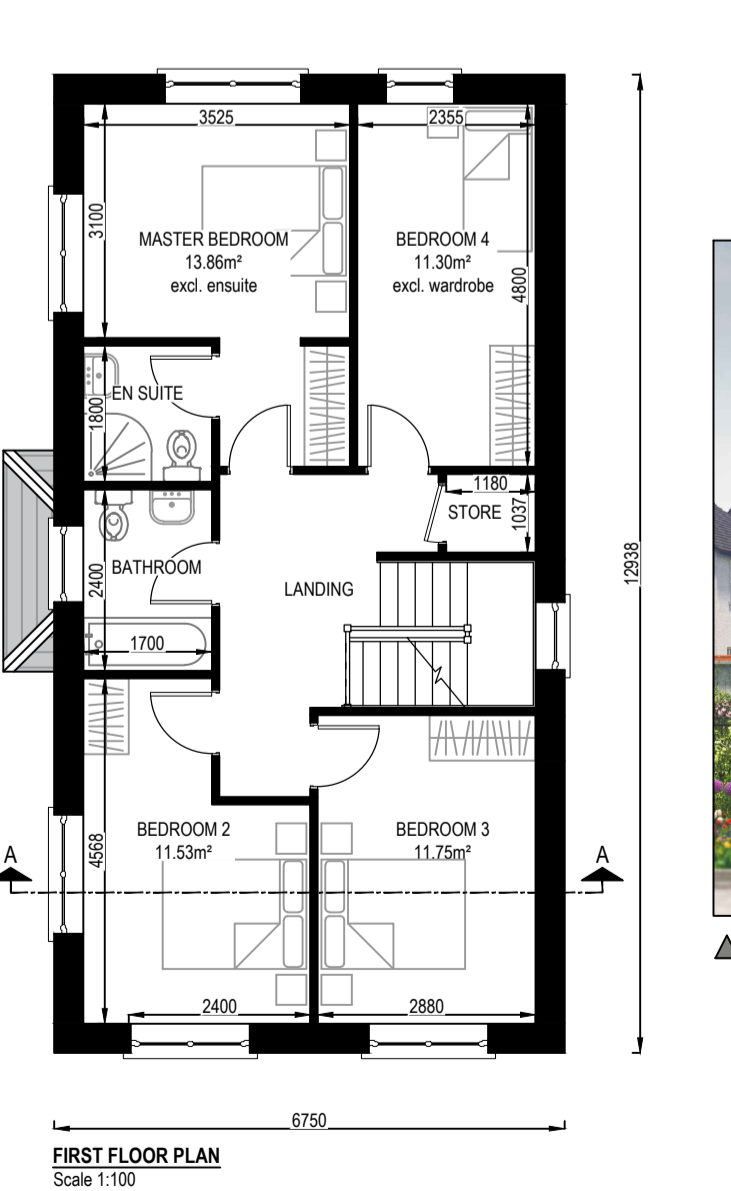
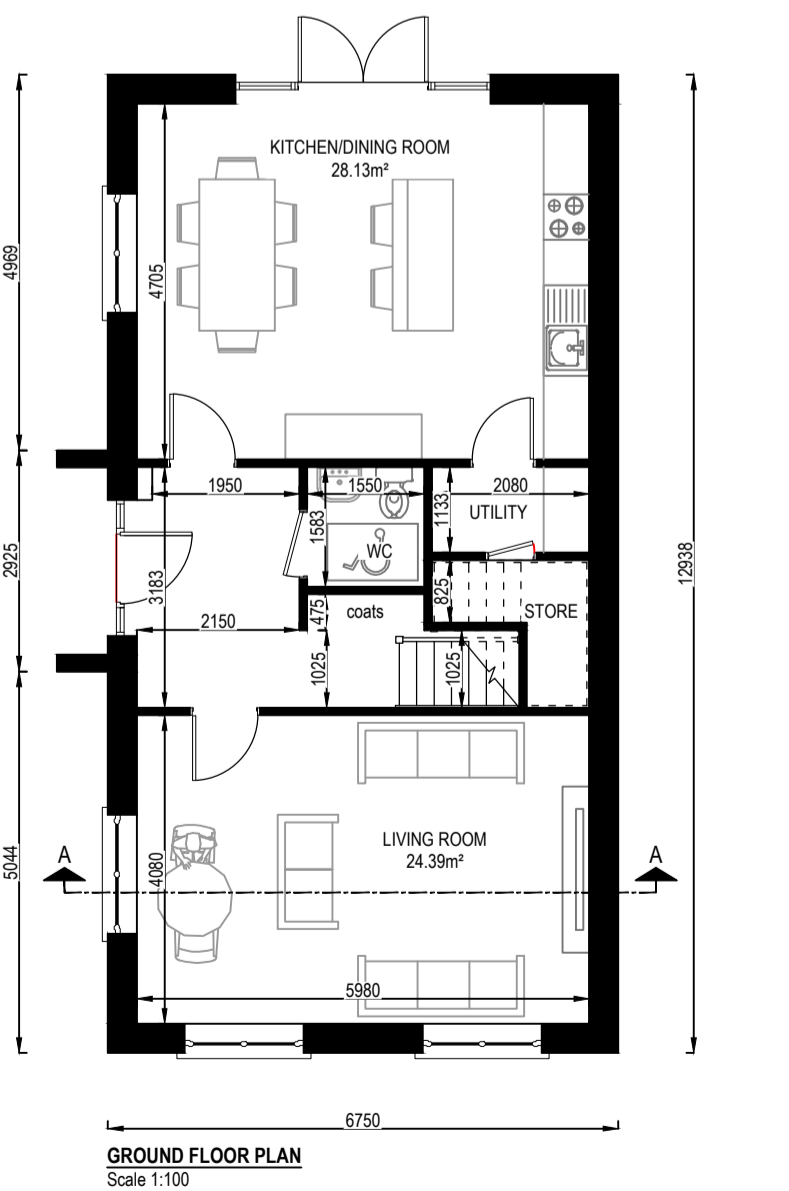
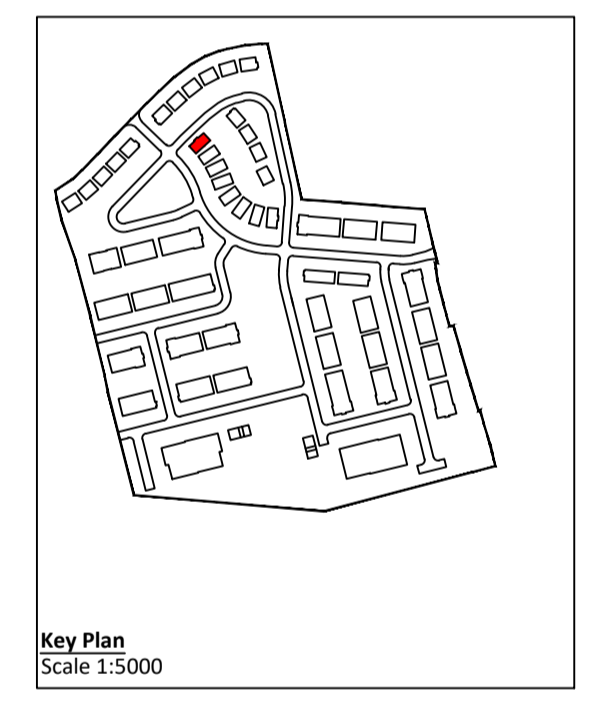
HOUSE TYPE B-DF (DUAL FRONTAGE) - SITE NO. 16



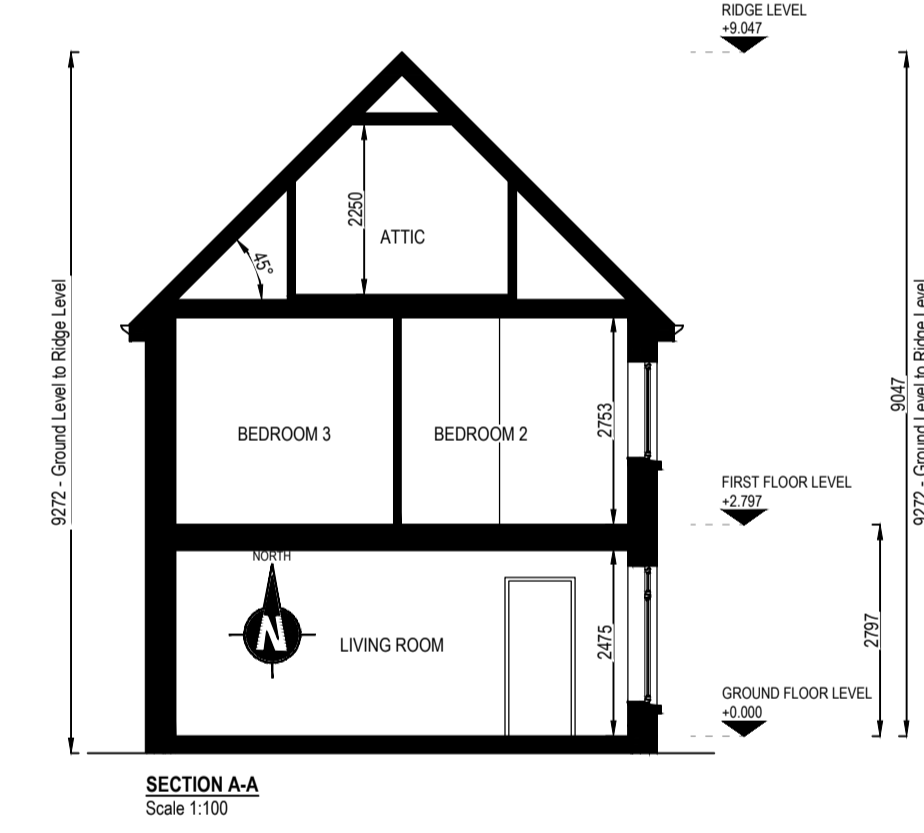
SEE KEY PLAN FOR ORIENTATION

FOR FINISHED FLOOR LEVELS
SEE DWG NO.'s 24004-A-112 & 113

House Type B 4 Bedroom 7 Person Detached House		House Type B 4 Bedroom 7 Person Detached House	
Taken from Quality Housing for Sustainable Communities Table 5.1 Space provisions and room sizes for typical dwellings			
4 Bedroom 7 Person House (2 Storey) (Agg. Bedroom = 13m ² +11.4m ² +11.4m ² +7.1m ²)			
Ground Floor Area	Required	House Type B	72.76m ²
First Floor Area	Required	House Type B	72.76m ²
Gross Floor Area	110m ²	House Type B	145.52m ²
Min. Main Living Room	15m ²	House Type B	20.12m ²
Aggregate Living Area	40m ²	House Type B	49.47m ²
Bedroom 1	13m ²	House Type B	14.65m ²
Bedroom 2	11.4m ²	House Type B	11.62m ²
Bedroom 3	11.4m ²	House Type B	11.53m ²
Bedroom 4	7.1m ²	House Type B	8.28m ²
Aggregate Bedroom Area	43m ²	House Type B	48.08m ²
Storage incl. excl. wardrobe	6m ²	House Type B	7.70m ²



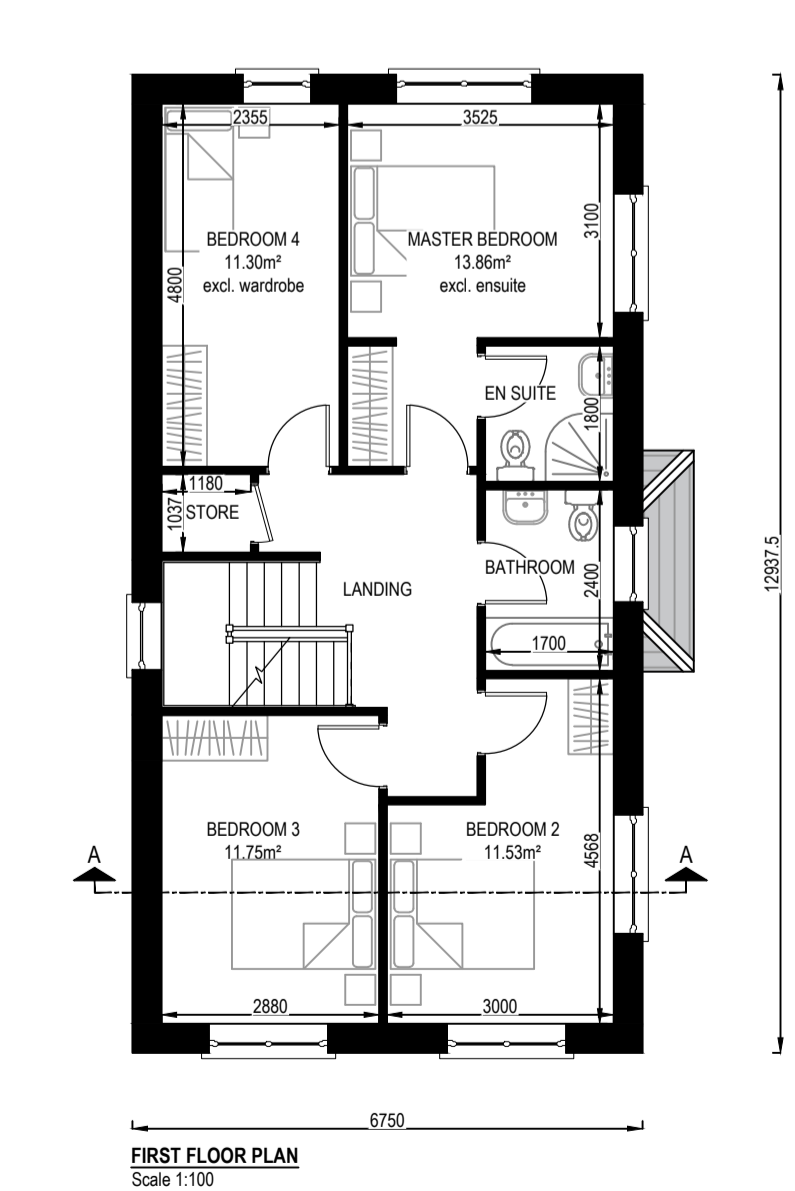
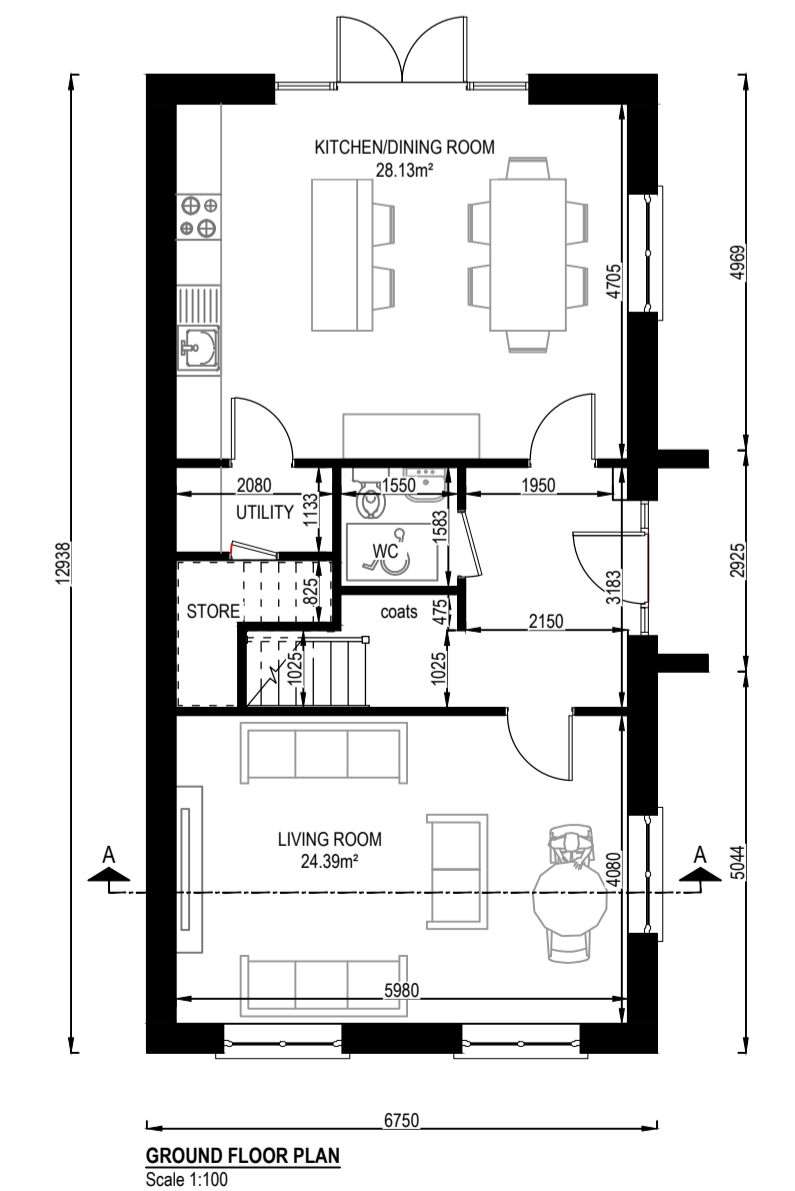
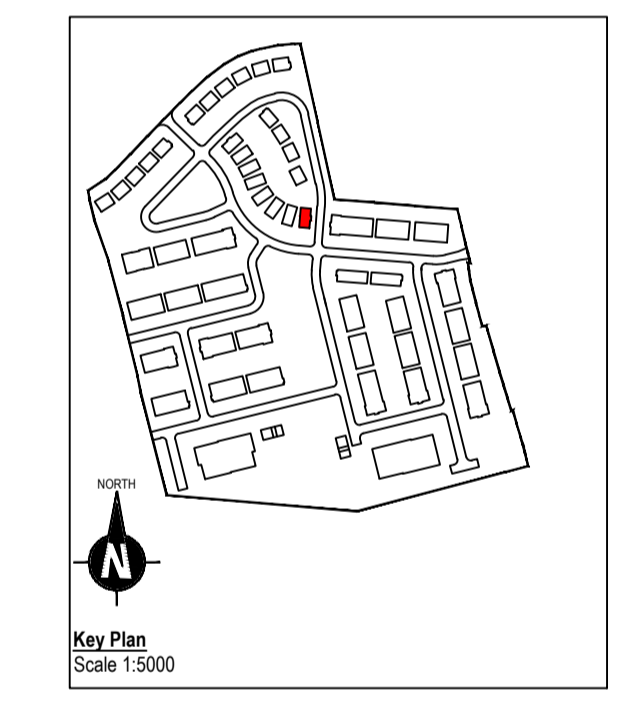
HOUSE TYPE B-DF (DUAL FRONTAGE) - SITE NO. 23



SEE KEY PLAN FOR ORIENTATION

FOR FINISHED FLOOR LEVELS
SEE DWG NO.'s 24004-A-112 & 113

House Type B-DF 4 Bedroom 7 Person Dual Frontage Detached House		House Type B-DF 4 Bedroom 7 Person Dual Frontage Detached House	
Taken from Quality Housing for Sustainable Communities Table 5.1 Space provisions and room sizes for typical dwellings			
4 Bedroom 7 Person House (2 Storey) (Agg. Bedroom = 13m ² +11.4m ² +11.4m ² +7.1m ²)			
Ground Floor Area	Required	House Type B-DF	72.76m ²
First Floor Area	Required	House Type B-DF	72.76m ²
Gross Floor Area	110m ²	House Type B-DF	145.52m ²
Min. Main Living Room	15m ²	House Type B-DF	24.38m ²
Aggregate Living Area	40m ²	House Type B-DF	52.52m ²
Bedroom 1	13m ²	House Type B-DF	13.86m ²
Bedroom 2	11.4m ²	House Type B-DF	11.53m ²
Bedroom 3	11.4m ²	House Type B-DF	11.75m ²
Bedroom 4	7.1m ²	House Type B-DF	11.30m ²
Aggregate Bedroom Area	43m ²	House Type B-DF	48.44m ²
Storage incl. excl. wardrobe	6m ²	House Type B-DF	6.69m ²



COPYRIGHT
THIS DOCUMENT AND ALL DATA CONTAINED HEREIN REMAIN THE PROPERTY OF O'DALY ARCHITECTS. IT IS SUPPLIED IN CONFIDENCE FOR EVALUATION PURPOSES ONLY UNDER THE CONDITION THAT SAME IS NOT USED, REPRODUCED OR TRANSMITTED IN ANY WAY TO OTHERS WITHOUT WRITTEN CONSENT.

DIMENSIONS
UNLESS OTHERWISE STATED, DIMENSIONS SHOWN ARE IN MILLIMETRES. NO DIMENSIONS TO BE SCALED FROM THIS DRAWING. ALL DIMENSIONS TO BE CHECKED BY THE CONTRACTOR ON SITE AND ANY DISCREPANCIES TO BE REPORTED TO THE ARCHITECT.

TAG NO.	ELEVATION TAG NOTE
E01	Red brick finish
E02	Limestone sills, surrounds & string course on brick elevations
E03	A-called uPVC windows & composite front door
E04	Selected fascia, soffit & rainwater goods
E05	Black concrete roof tile complete with continuous dry verge & dry ridge systems
E06	Precast concrete sills to dashed elevations
E07	Dry dash finish

THIS DRAWING SHOULD BE READ IN CONJUNCTION WITH THE HOUSING QUALITY ASSESSMENT SCHEDULE DOCUMENT REF. 24004-AR-HQA

oda
o'daly architects
1st Floor - Unit 13(B) - Mullaghboy Industrial Estate
Navan - County Meath - Tel: (046) 9021233
Mobile: (087) 0525233 - Email: ivan@odaly.ie

Registered Architect 2026 | RIAI
Practice Member 2026 | RIAI

Client:
Loughglinn Developments Ltd.

Project Name and Address:
Proposed Large Residential Development (LRD) at "Cropark 1st Division", Kildarey Road, Trm, County Meath.

Project Stage:
Planning

Drawing Name:
House Type B-DF
4 Bedroom, 2 Storey, Detached, Dual Frontage House
Site No.'s 16 & 23

Drawn By: iod	Scale: as shown @ A1
Checked By: iod	Date: 04.06.2026
Drawing Number: 24004-AR-203	Revision: P01